



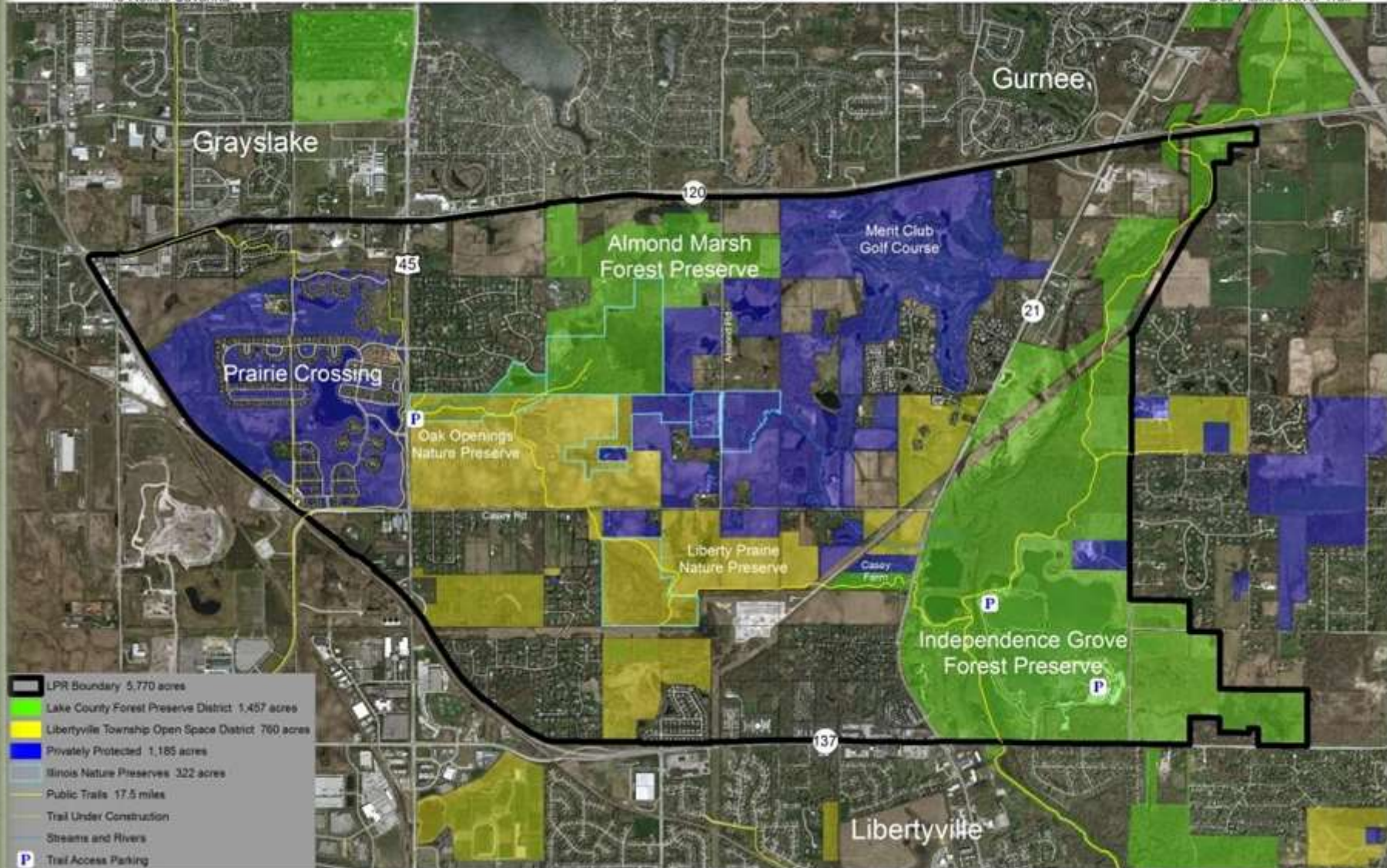
Liberty Prairie Reserve

5,770 Acres

3,402 Acres Protected

To Rollins Savanna

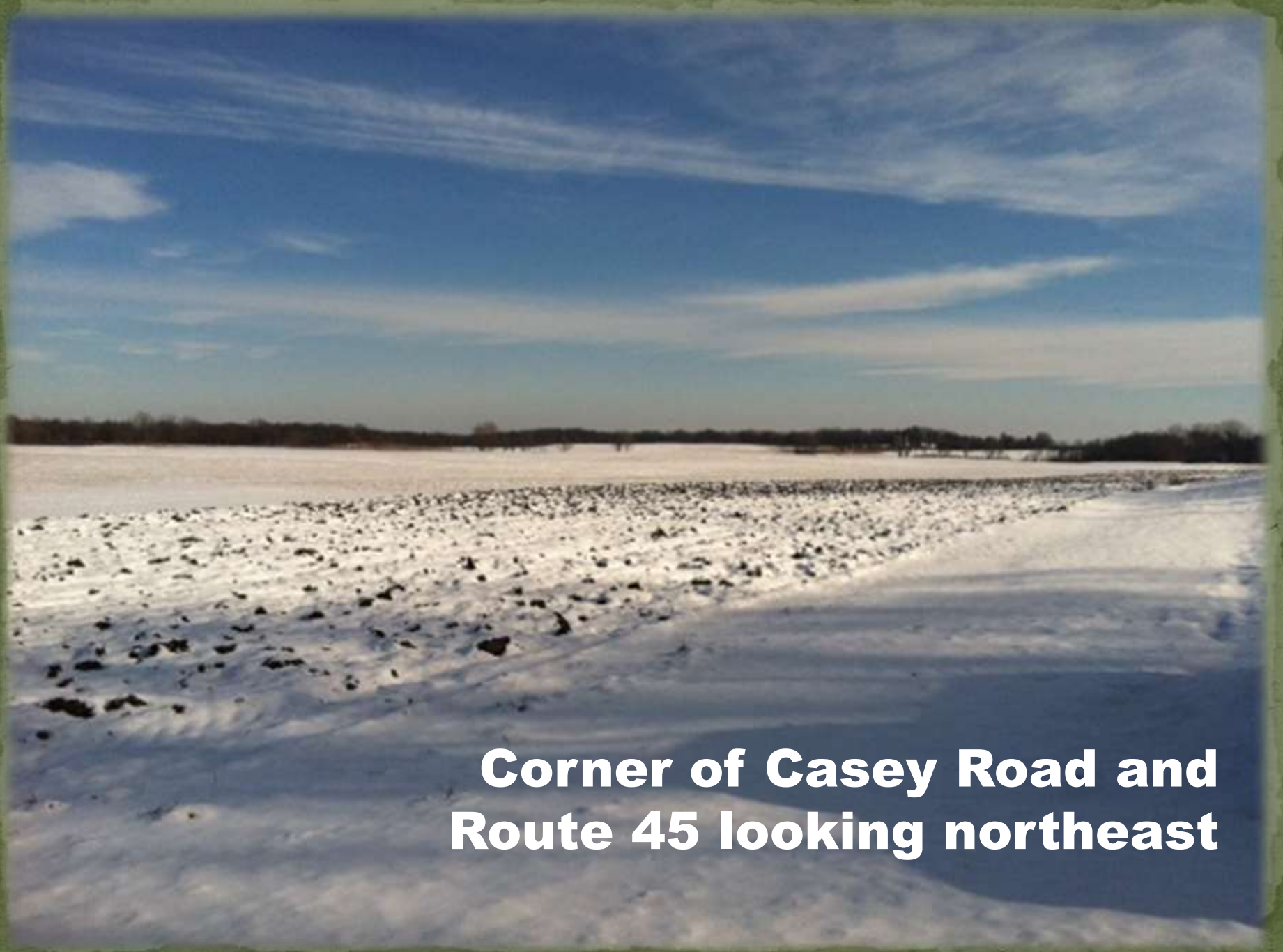
Des Plaines River Trail



- LPR Boundary 5,770 acres
- Lake County Forest Preserve District 1,457 acres
- Libertyville Township Open Space District 760 acres
- Privately Protected 1,185 acres
- Illinois Nature Preserves 322 acres
- Public Trails 17.5 miles
- Trail Under Construction
- Streams and Rivers
- Trail Access Parking

Des Plaines River Trail

Aerial Photograph: 05/2010
08/2013



**Corner of Casey Road and
Route 45 looking northeast**



**On Casey Road near Almond
looking southeast**

**Corner of Casey Road and
Route 21 looking south**



A photograph of a rural landscape. In the foreground, there is a field of corn plants with green leaves and some yellowing. The middle ground shows a flat expanse of land, possibly a field or meadow, leading to a dense line of trees in the distance. The sky is overcast and grey. The entire image is framed by a dark green, textured border that looks like torn paper.

**Near northern boundary of
township, looking southeast**



45

P

Tjeken
 3,229 ac. gross
 3,192 ac. net
 \$47,880.00
 03/22/1991

Donnelley
 42,833 ac. gross (est.)
 41,583 ac. net (est.)
 Donation
 12/23/1987

U. of C. (Donnelley)
 88,714 ac. gross
 87,837 ac. net
 \$1,317,555.00
 03/04/1991

Rehab Inst. (Donnelley)
 48,750 ac. gross
 48,135 ac. net
 \$722,025.00
 03/04/1991

Inholding

Ketting
 133,573 ac. gross
 131,573 ac. net
 \$1,806,257.20
 12/09/1992

Casey Rd

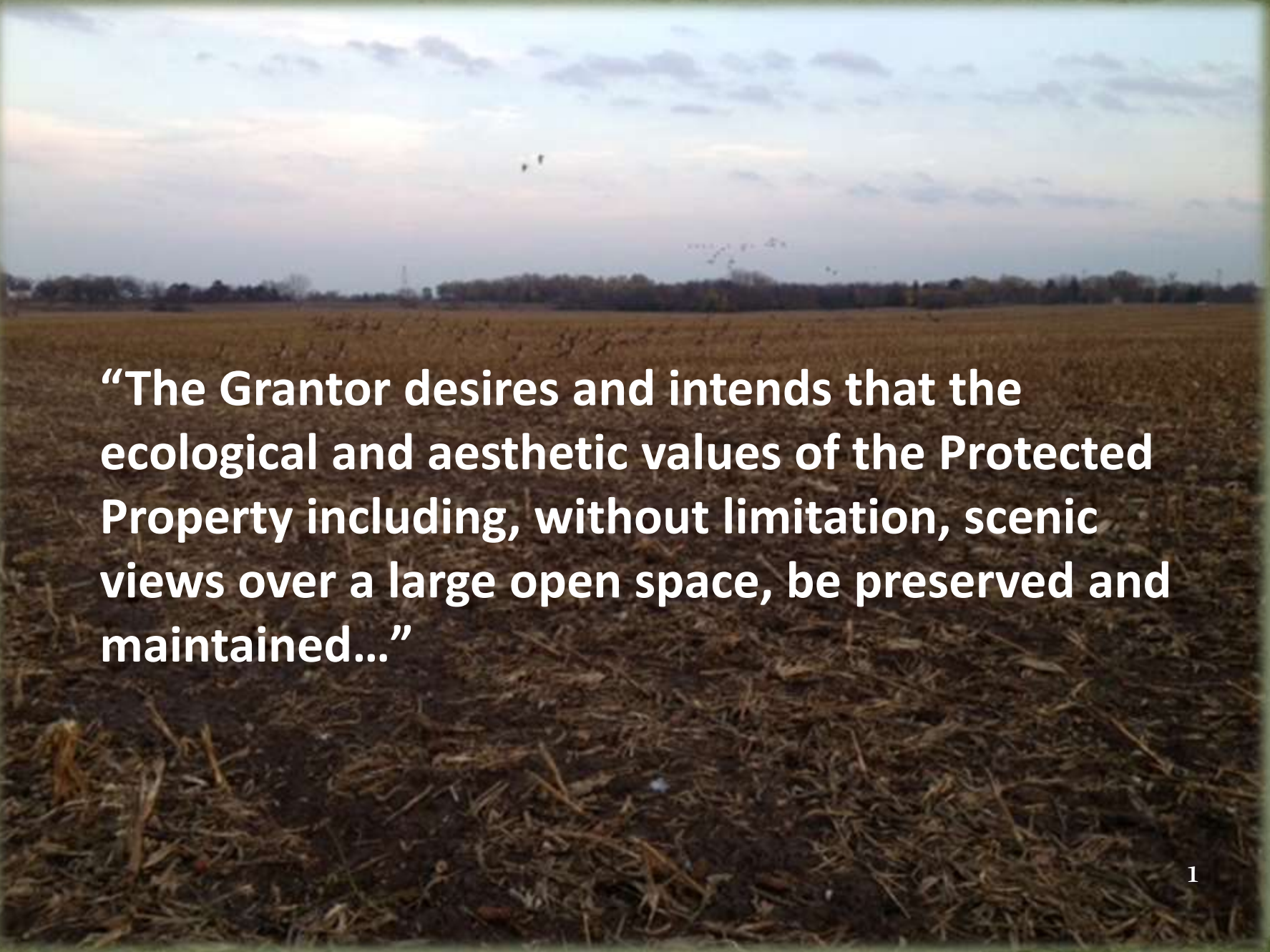


1985 CONSERVATION EASEMENT


PLACED BY GAYLORD AND DOROTHY DONNELLEY

HELD BY OPENLANDS


1987 DONATION TO TOWNSHIP



“The Grantor desires and intends that the ecological and aesthetic values of the Protected Property including, without limitation, scenic views over a large open space, be preserved and maintained...”



If Openlands was ever to transfer responsibility for this easement to another party, it must be a qualified organization “whose primary purpose includes conservation of land, natural areas, open space or water areas, or the preservation of native plants or animals or biotic communities...”

- 
- **No buildings**
 - **Farming may continue**
 - **Foot path? Yes, if Openlands approves**

45

P

Tjeken
 3,229 ac. gross
 3,192 ac. net
 \$47,880.00
 03/22/1991

Donnelley
 42,833 ac. gross (est.)
 41,583 ac. net (est.)
 Donation
 12/23/1987

U. of C. (Donnelley)
 88,714 ac. gross
 87,837 ac. net
 \$1,317,555.00
 03/04/1991

Rehab Inst. (Donnelley)
 48,750 ac. gross
 48,135 ac. net
 \$722,025.00
 03/04/1991

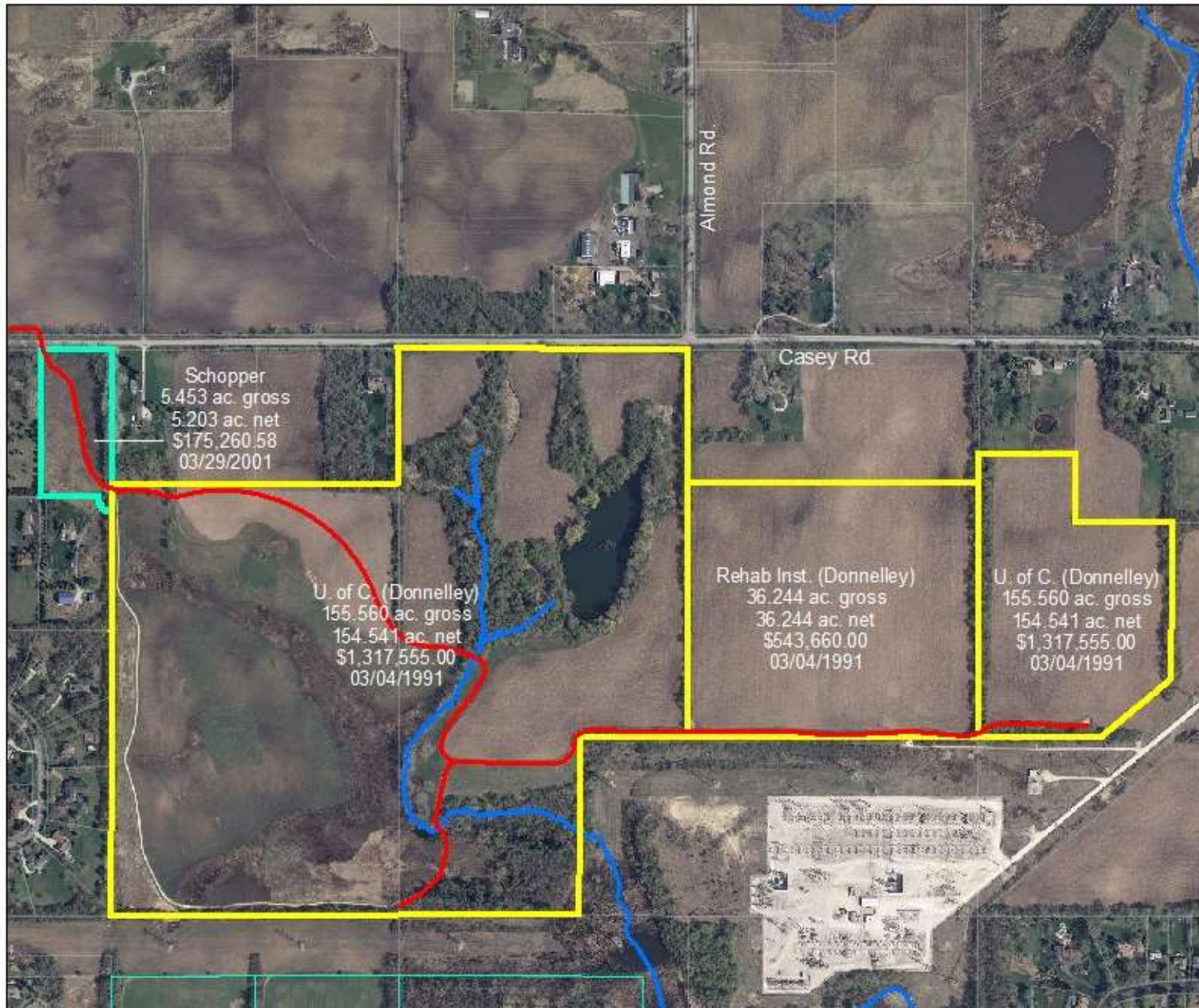
Inholding

Ketting
 133,573 ac. gross
 131,573 ac. net
 \$1,806,257.20
 12/09/1992

Casey Rd

Casey Road South-Acquisition History

195.988 acres






1991 ACQUISITION

329 acres

**1990 protections placed by
Gaylord and Dorothy Donnelley**



- 
- 1. Conservation easement on all**
 - 2. Natural areas dedicated to Illinois Nature Preserve Commission**
 - 3. 20-year farm lease on remainder**

Key easement differences

- **Ag buildings allowed on ag lands**
- **Parking lot and trail in specified locations**
- **No ATVs or snowmobiles**
- **“...may employ sound conservation practices such as prescribed burning and brush control in order to restore and manage the natural resources on the Protected Property.”**

45

P

Tjeken
 3,229 ac. gross
 3,192 ac. net
 \$47,880.00
 03/22/1991

Donnelley
 42,833 ac. gross (est.)
 41,583 ac. net (est.)
 Donation
 12/23/1987

U. of C. (Donnelley)
 88,714 ac. gross
 87,837 ac. net
 \$1,317,555.00
 03/04/1991

Rehab Inst. (Donnelley)
 48,750 ac. gross
 48,135 ac. net
 \$722,025.00
 03/04/1991

Inholding

Ketting
 133,573 ac. gross
 131,573 ac. net
 \$1,806,257.20
 12/09/1992

Casey Rd

KETTING PARCEL – 136 acres – purchased 1992

**2007 – Township placed conservation easement on site
Held by Lake County Forest Preserve District**



**“Township intends to achieve certain purposes...
over time restoring the agricultural lands to a condition
approximating what existed prior to conversion, and, in
general, by preserving natural plant and animal communities,
and the protection of water quality, open space and scenic
areas in the neighborhood in which the Property is located...”**



“...the protection of the property will enhance the ecological value of other lands within the area known as the Reserve, which is home to at least 29 threatened or endangered plant or animal species...”



“...and Bulls Brook is of statewide ecological significance due to its exceptionally high water quality and high quality habitat”

“...and Bull’s Brook contains 14 species of fish that have been identified, including state threatened Iowa Darters and Blackchin shiners”

“...the permanent protection of the Property will help to ensure the quality of Bull’s Brook in perpetuity and will contribute to its ecological vitality...”



Casey Rd

MacArthur

17.248 ac. gross
18.805 ac. gross (original)
16.314 ac. net
17.035 ac. net (original)
\$600,000.00
02/25/2000

Casey

5.509 ac. gross
5.631 ac. gross (original)
5.278 ac. net
5.400 ac. net (original)
\$459,000.00
12/17/2007









- 1. Gather information**
- 2. Explore options**
- 3. Seek public input**
- 4. Create conceptual plan**
- 5. Seek public input on conceptual plan**
- 6. Modify based on above**
- 7. Create budget**
- 8. Seek partners and funding support**
- 9. Finalize plan**
- 10. Prepare for implementation**

