






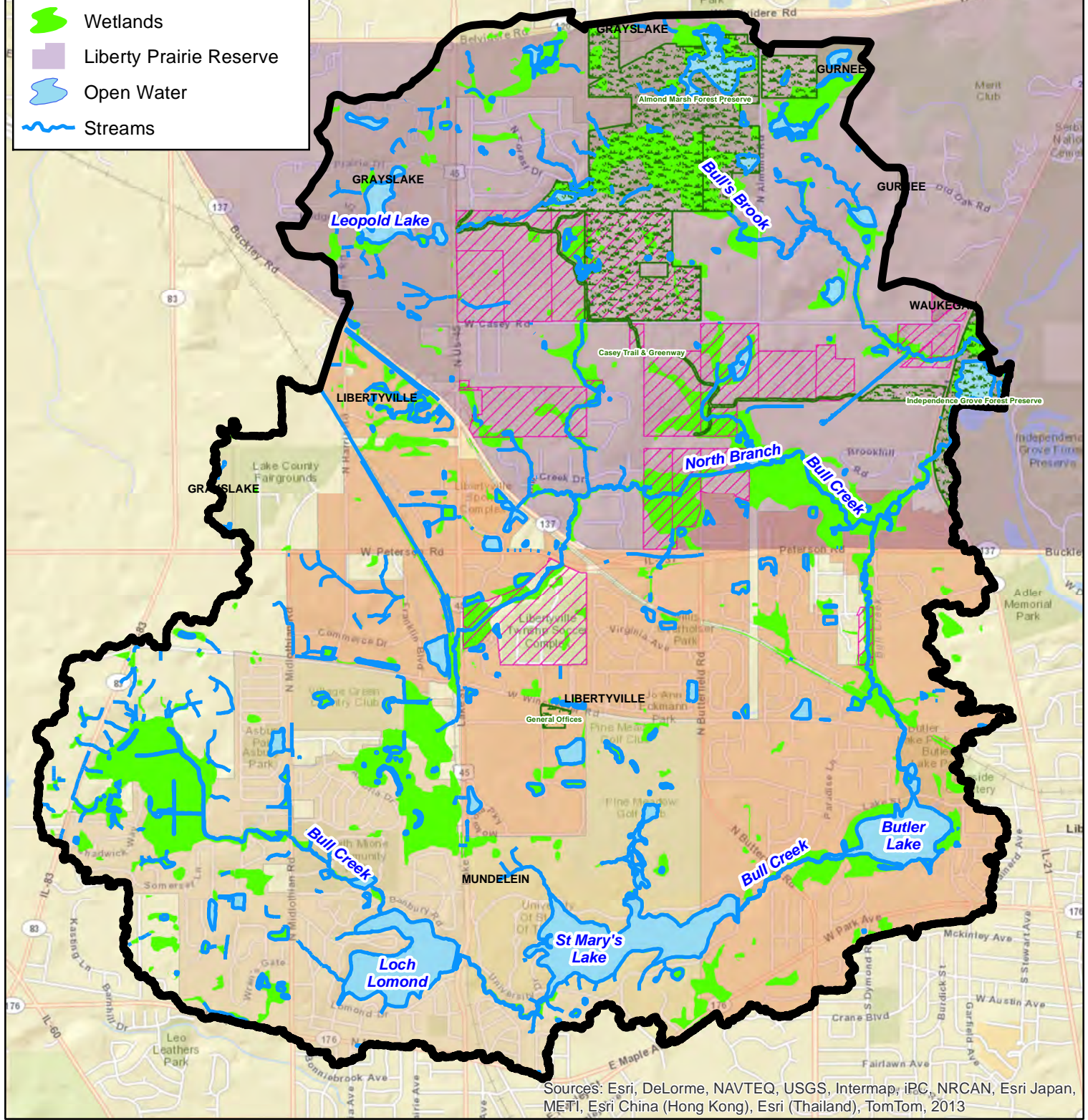


# Bull Creek-Bull's Brook Watershed

-  Watershed Boundary
-  Forest Preserves
-  Township Owned Parcels
-  Wetlands
-  Liberty Prairie Reserve
-  Open Water
-  Streams



Sources: Esri, DeLorme, NAVTEQ, USGS, Intermap, iPC, NRCAN, Esri Japan, METI, Esri China (Hong Kong), Esri (Thailand), TomTom, 2013



Map produced by Lake County Stormwater Management February 21, 2008

Data Sources:  
Lake County Department of Information and Technology,  
GIS and Mapping Division



**LIBERTYVILLE TOWNSHIP**



**STORMWATER MANAGEMENT COMMISSION**